

Regional Maternal and Pediatric Care

The only Choice?

Mathias Gysler MD

Overview

- CHN Mandate
- Present Scope of Services
- Medical Manpower
- Nursing Manpower
- Allied Health Professionals
- Hospital Environment
- Regionalization

CHN Mandate

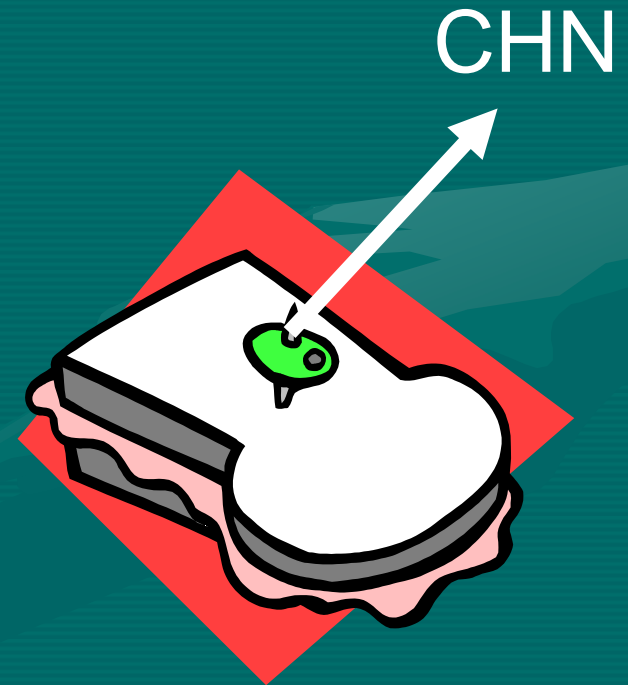
- Develop Network
- Family Centered Care
- Care Closer to Home
- Measure Outcomes
- Quality of Care
- Standards across a Network

Child Health Network

- Structure
 - Governance by Partners
 - Central Administration
 - Regional Clusters
- Perinatal Pilot Project
- Maternal- Neonatal Transport
- Performance Evaluation
- Internal Review
- Niday Database

Present Scope of Services

- Pediatric Services
 - Inpatients,
- Neonatal Services
 - Level 1, 2, 2+, 3
- Obstetrical Services
 - Level 1, 2, 2+, 3



Current Regionalization

- Little Differentiation
- Continued Pressure on Level 3
- Resource Issues
- Manpower Issues

Manpower

- Medical Manpower
 - Pediatric on Call
 - Neonatal Intensive Care Unit
 - Pediatric Community Services
 - Obstetric Coverage
 - Obstetric Outpatient Services

Nursing Manpower

- Pediatric Inpatient Units
- Pediatric Outpatient Services
- Neonatal Intensive Care
- Education
- Training
- ?Employment Conditions

Hospital Environment

- Space
- Budgetary Restraints
- Competitiveness of Seasonal Pediatrics
- Neonatal Intensive Care
- Unprotected Programs

Allied Health Professionals

- Nurse Practitioners
- Respiratory Technology
- Physiotherapy
- Radiography, Laboratory Services etc.

Regionalization

- Same Level 3 Hospitals
- Fewer Number of Regional Centers
- Community Hospitals
- Improved Transport Services
- Education & Support
 - Staff & Patients
- Balanced Investment

Regionalization

- Further Defined Scope of Practice
 - Pediatrics
 - Ambulatory Care
 - Specialty Clinics
 - Inpatient Pediatrics
 - Neonatology
 - Ventilation
 - Total Parental Nutrition
 - OBS
 - 30 Weeks Gestation

Regionalization

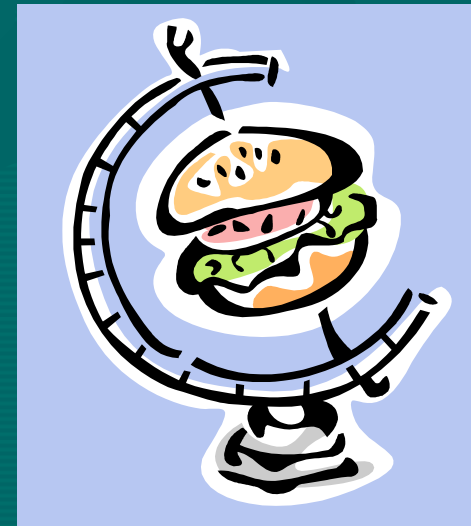
- Regional Centers
 - 24 h in House OBS, Pediatrics, Anesthesia
 - Neonatal ICU Staff
 - Nurse Practitioners, Nursing Staff, Respiratory Technology and Laboratory Staff
 - Inpatient Pediatric Wards
 - adequate Size and Staff

Regionalization

- Remove Pressure from Level 3
 - Increased Retro-Transfers
 - Accept Transfers to 30 weeks
- Care Closer to Home
- Support Community Hospitals as Partners
- Partner with Level 3 to facilitate Care

Regionalization

- Assure Manpower Supply
 - Medical, Nursing etc
- Facilitate Guidelines across Network
- Standards
- Accountability
- Quality Measurements



Regionalization

- Does it make Sense?
 - Cardiac Care
 - Neurosurgery
 - Cancer Care
 - Cancer Centers
 - Site Specific
 - Other Jurisdictions
 - Alberta, British Columbia
 - Europe

Regional Maternal and Pediatric Care

The only Choice?

YES!